

# Various Vases

By Mavis Elliott

This set of designs were inspired by the recently introduced vase and flower Gold Label stickers. I found they combine really well with pretty papers and quilling.

## Materials Required:

Gold Label Stickers XL582U & XL584U Silver.

Purple Mirri Paper A5.

Quilling Paper: 3mm in Purple and Lilac, 5mm & 10mm in White.

Quilling Tool (optional).

Scrap of White Embossed Wallpaper.

Mother's Day Sticker: XL465U-02 (Similar).

Scissors or Craft Knife.

P.V.A. Craft Adhesive.

Card Mount: DEC3U-45 Hammer White.



## To Make The Card:

Cut a panel of purple Mirri paper to 80mm x 105mm and glue onto the front of the card mount, placing it central from side to side and approximately 12mm from the top edge.

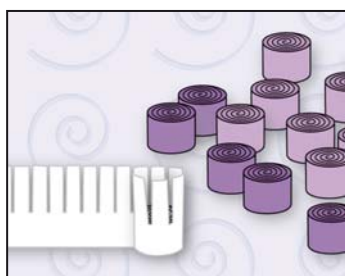
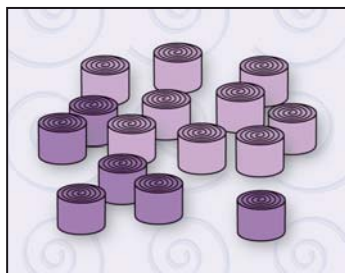
Cut a panel of embossed wallpaper to 75mm x 100mm and glue this centrally onto the purple.

Stick the vase onto a piece of purple Mirri paper and carefully cut to the sticker outline. Stick small strips of purple Mirri behind the leaves of one spray, leaving the stem unstuck. Carefully cut around the leaves to the sticker outline trying not to handle the stem too much to keep it sticky. Place back on the sticker sheet until you need to use it. Do another three sprays in this way.

Glue the vase to the panels already on the card mount just 2 or 3mm from the bottom edge and central sideways. Place two of the leaf sprays, prepared earlier, into place at the neck of

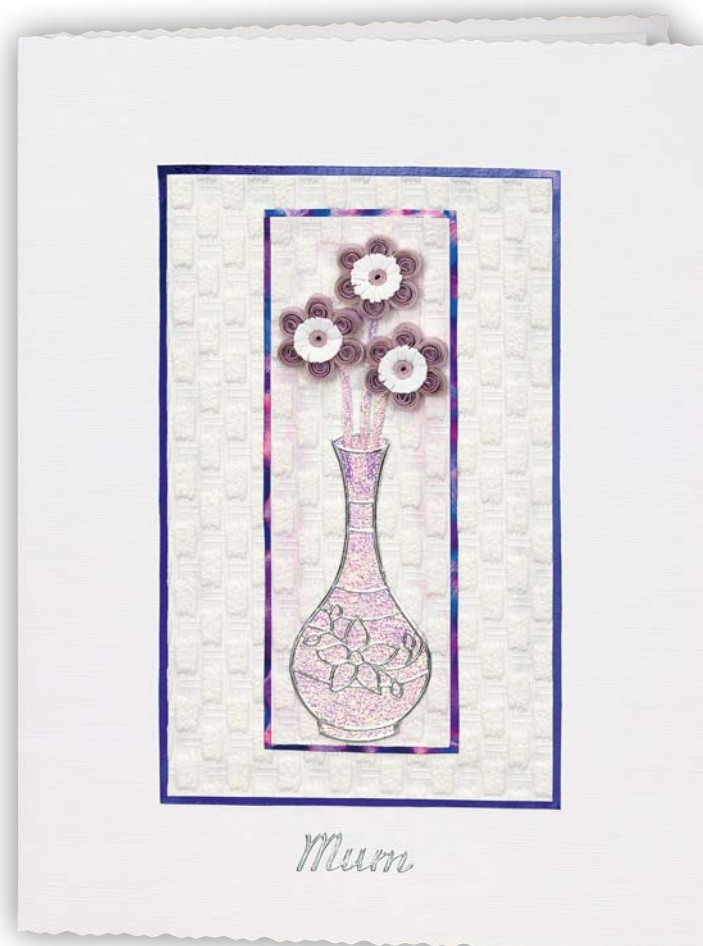
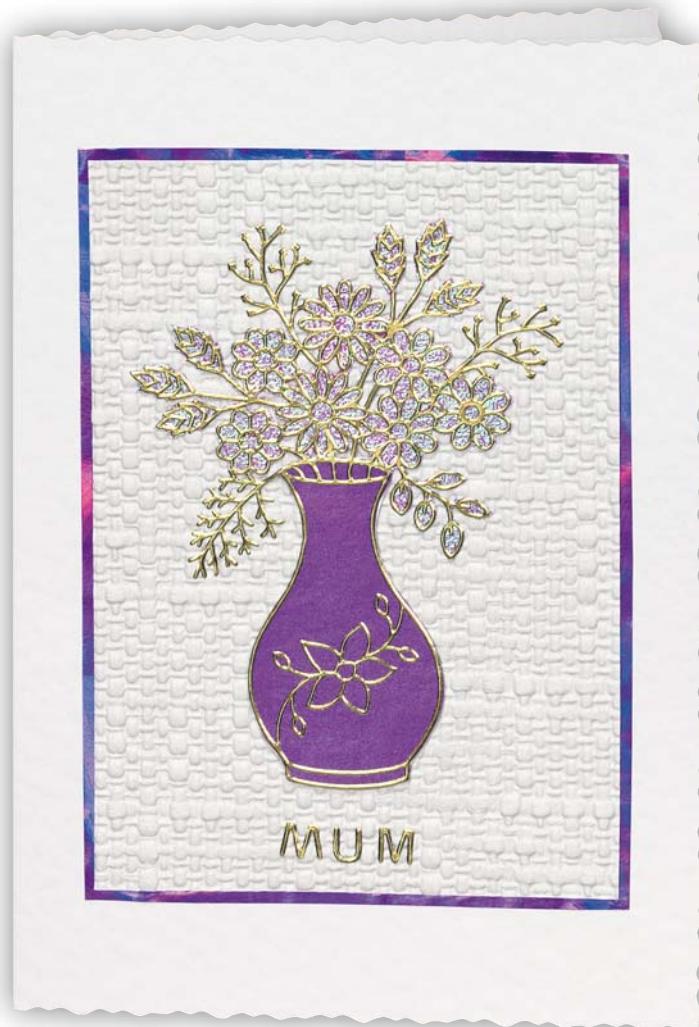
the vase (see photo), the stem should hold them in place without the need for glue but you can add a little glue behind the single leaf at the tip of each stem for stability if you need to.

All of the tight pegs need to have small centres so, if you don't have a fine tool, it would be better to roll by hand. Using lilac paper, roll a 14cm length to a tight peg, glue the end to keep it tight. Make 9 in lilac and 6 in purple.



Cut three 11cm lengths of 10mm white paper and fringe along one edge. Glue one end of each to a purple peg and wind tightly around the peg, gluing the end. Gently press the fringe open.

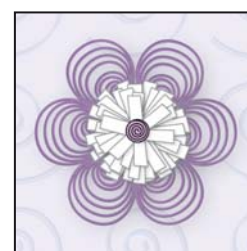
Cut three 11cm lengths of 5mm white paper and fringe along one edge, glue one end of each to a purple peg. Wind the white tightly around the peg, glue the end but this time leave the petals upright for now.



Use 11cm lengths of purple to make 18 loose closed coils. Glue the coils over to one side to make offset coils.



Glue six of these loose coils around each of the three small, unfolded fringe flowers, placing each 'petal' so the offset coils are towards the centre then press open the fringe.



Arrange these flowers in the vase until you are happy with their position, placing the two leaf sprays in the correct place before gluing the quilled flowers in place. Glue three sets of three lilac pegs around the flowers using the photo as a guide then add the wording sticker to finish.

I like the effect of embossed wallpaper combined with these vases and many different embossings look good so, if you do not have the exact one I have used, try what you do have, it may look even better!

Shimmer paper can look very effective both behind the flowers and the vases.



# Craft CREATIONS<sup>Ltd</sup> Magazine

Hello,

We hope you enjoy this free article taken from a back issue of the Craft Creations Magazine. You may hand make copies of the card(s) featured in this project, to give away or sell, as many times as you like. You may not use the project, text, pattern or pictures for any other purpose nor make the project using any automated process.

All the free articles available for download on our web site are at least one year old. If you want the latest projects, designer profiles, gallery pages and more, then you need to subscribe to the quarterly Craft Creations Magazine.

## Subscription Benefits:

- \* A free gift with every issue.
- \* 10% off every order placed with Craft Creations\*.
- \* £2.50 off post and packing on orders over £20\*.
- \* Prize competition in every issue.
- \* New product information.

You can subscribe to the quarterly Craft Creations Magazine or purchase any of the back issues from our online shop.

\* All Craft Creations Magazine subscribers will receive an additional 10% discount off their orders during their subscription period only. Subscribers will also receive £2.50 off post and packing on orders over £20 (after discount). These benefits are not applicable on certain items such as: Magazine Subscriptions, Gift Vouchers, Products already on Promotion, Special Offers or 'SPOF' packs and cannot be combined with any other vouchers or offers.

Craft Creations Limited  
Ingersoll House, Delamare Road, Cheshunt, Hertfordshire, EN8 9HD, England.  
Tel: 01992 781900 Fax: 01992 634339

The details above are correct as of 1st May 2006, but are subject to change without prior notice.