

Stars & Beads

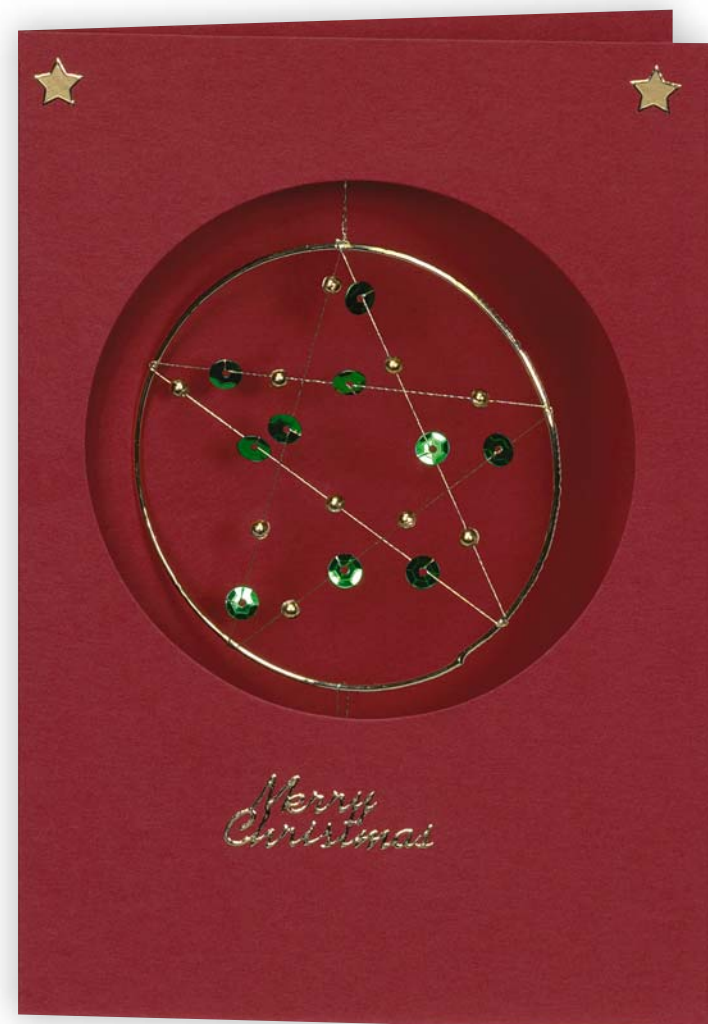
By Karen Clough

Materials Required:

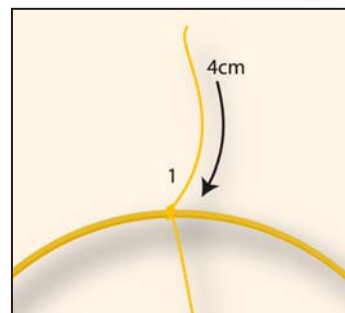
- 6.5cm Diameter Gold Metal Bangle.
- Good Quality Gold Metallic Machine Embroidery Thread.
- 7 x 5mm Gold Beads.
- 8 x 7mm Copper Six Point Sequin Stars.
- A Small Eyed Needle (to go through the beads).
- Gold Label Stickers: XL409U-01 Happy Christmas and XL003U-01 Stars.
- Clear Tape and Double Sided Tape.
- Card Mount: SF06U-46 Hammer Cream.

To Make The Card:

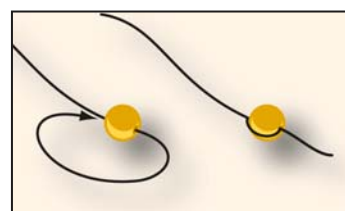
Thread the needle with about a 1 metre length of gold thread. Attach the thread to the bangle



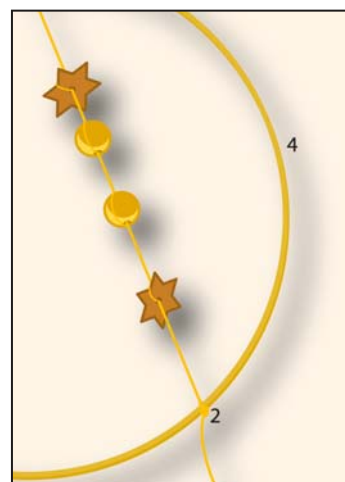
about 4cm from the end (to leave a tail), tying with a secure knot. This is position 1 on the diagram.

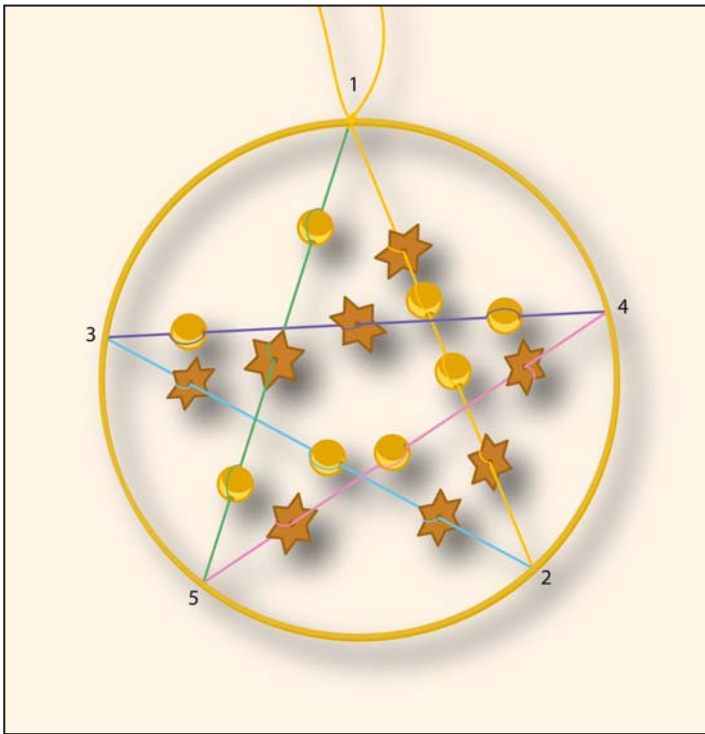


Each bead and star are threaded on in the following way. Pass the thread through the bead or star, take it round one side and back through the hole. This allows the item to be moved along the thread to the desired position, but stops them moving when you don't want them to.



Thread a star then two beads and another star on to the thread as described and move them all so they are close to the bangle. Lay the thread across the right side of the hoop, pull tight and knot at the point marked 2 as shown. To get the exact position, place the work





on the diagram above with the original knot at point 1 and tie the second knot at 2. Use the diagram for the position of the other points as you work, the thread is shown in different colours for clarity. Continue threading as follows.



Thread on a star, a bead and a star (blue line) then pull tight and knot at point 3. Thread on a bead, a star and a bead (mauve line) then pull tight and knot at point 4. Thread on a star, a bead and a star (pink line) then pull tight and knot at point 5. Thread on a bead, a star and a bead (green line) then pull tight and knot back at 1.

Make a hanging loop by knotting the two ends together and trim off any excess. Place the opened out card face down on a flat surface, mark out and cut an 8cm diameter circle onto the front panel (all the other designs are shown in DA09U cards, which you may prefer to use for this design also).

Lay the hoop centrally in the aperture space with the loop at the top centre. Tape the loop onto the back of the card above the aperture with clear tape. Cut one 4cm length of gold thread, loop it around the bottom centre of the hoop and tape the ends onto the card below the aperture.

To finish the card add a peel off greeting and decorate with peel off stars in assorted sizes. The hoop can be removed and used as a tree decoration in the following year or years.





Craft CREATIONS^{Ltd} Magazine

Hello,

We hope you enjoy this free article taken from a back issue of the Craft Creations Magazine. You may hand make copies of the card(s) featured in this project, to give away or sell, as many times as you like. You may not use the project, text, pattern or pictures for any other purpose nor make the project using any automated process.

All the free articles available for download on our web site are at least one year old. If you want the latest projects, designer profiles, gallery pages and more, then you need to subscribe to the quarterly Craft Creations Magazine.

Subscription Benefits:

- * A free gift with every issue.
- * 10% off every order placed with Craft Creations*.
- * £2.50 off post and packing on orders over £20*.
- * Prize competition in every issue.
- * New product information.

You can subscribe to the quarterly Craft Creations Magazine or purchase any of the back issues from our online shop.

* All Craft Creations Magazine subscribers will receive an additional 10% discount off their orders during their subscription period only. Subscribers will also receive £2.50 off post and packing on orders over £20 (after discount). These benefits are not applicable on certain items such as: Magazine Subscriptions, Gift Vouchers, Products already on Promotion, Special Offers or 'SPOF' packs and cannot be combined with any other vouchers or offers.

Craft Creations Limited
Ingersoll House, Delamare Road, Cheshunt, Hertfordshire, EN8 9HD, England.
Tel: 01992 781900 Fax: 01992 634339

The details above are correct as of 1st May 2006, but are subject to change without prior notice.