

Summer Sails

By Nikki Harvey

Materials Required:

Alchemy Pearl Paper 1 x A5 Sheet of Each:
Gold, Bronze, Baby Pink, Bubble Gum Pink,
Rioja Red, Ivory, Lilac, Passion, Evergreen,
Kingfisher Blue, Regal Blue and Silver.

Scraps of Astralux Black Card.

Tracing Paper, Pencil and Ruler.

Craft Knife and Cutting Mat.

Clean Paper.

Clear Acetate or Polypropylene Bag.

Glue Stick and Clear Tape.

Double Sided Tape.

Card Mount: DF01U-48 Hammer Pale Blue.

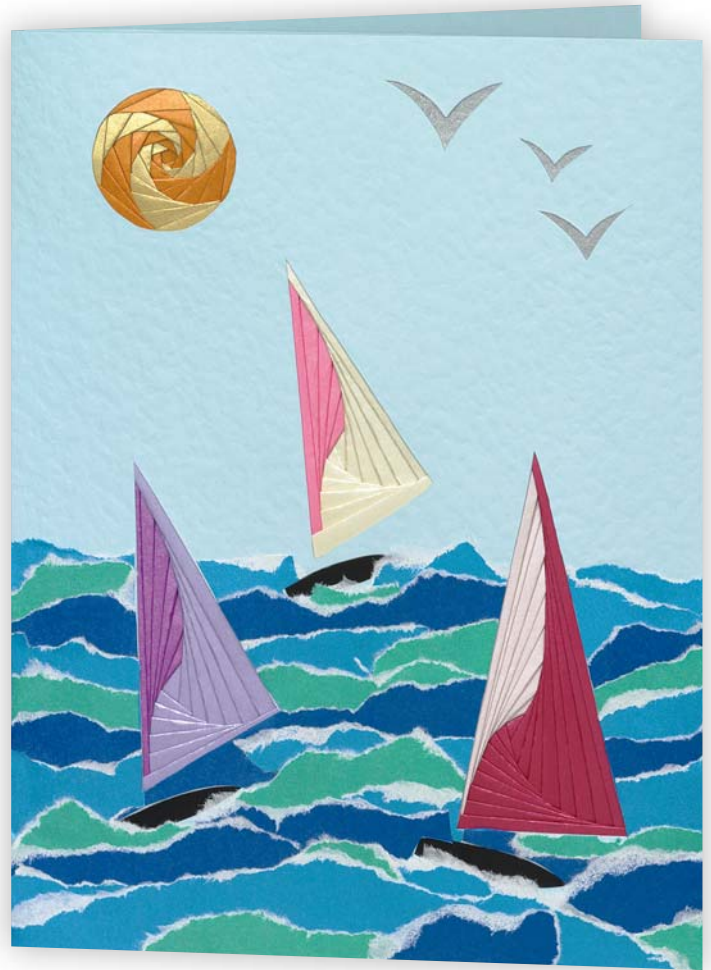
To Make The Card:

Trace just the outlines (not the segments) of the ships, sun and birds from the diagram. Place this tracing face up on the back of the centre panel of the card mount lining it up neatly. Tape in place and cut along all the lines using a ruler for the sails to keep the edges nice and straight. Remove the tracing, fold the card in the correct way and place face up on some clean paper.

Make the sea from the evergreen, kingfisher and regal blue paper used in a random mix. The paper needs to be torn in the following way to give the white feathered edge which looks like sea spray.

Take one of the coloured sheets and hold an edge on the table with your thumb. Tear the main sheet up from this to leave a strip of about 1cm depth, which should have a nice white edge and be a bit uneven. These strips need to be between 2 and 6cm long approximately with the ends curved down a little – a bit slug shaped (yuk)! Use the glue stick to glue these torn pieces onto the card mount. Begin at the horizon and work your way down to the bottom overlapping the lower edge of each row with the pieces from the following row.

Let the side edges overlap the card mount a little as they will give a neater edge if they are



trimmed later. Similarly, let the waves go over the edges at the sails too and trim them neatly later. For the boards, we want to get some nice frothy spray to partly cover the aperture so a bit of careful tearing and placement is needed.

Once the sea is completed, leave aside for the glue to dry properly before trimming off the excess around the edges and the sails using a knife and ruler. Cut some silver paper to fit behind the three seagulls and fix into place with the glue stick. Cut some black astralux to fit behind the surf boards and stick into place with the glue stick ensuring that none of the black shows through the sail apertures.

Now you need to work the Iris folds, place the acetate or polypropylene bag over the diagram and hold in place with masking tape or clear tape that has been stuck to the back of your hand a couple of times so it is not too sticky and can be removed without tearing your magazine. Cut some 3cm wide (any length) strips of gold and bronze for the sun and fold each strip lengthwise.

1. Start with a bronze strip, line the folded edge up to the line of the segment marked '1'. Place the strip so there is approx. 1cm beyond the line at both ends, and snip off the excess length. Tape this strip to the acetate on the bottom edge.

2. Place a gold strip over the section marked '2' lining up along the line as shown and tape as before.

3. Place a bronze strip over the section marked '3' lining up along the line as shown and tape as before.

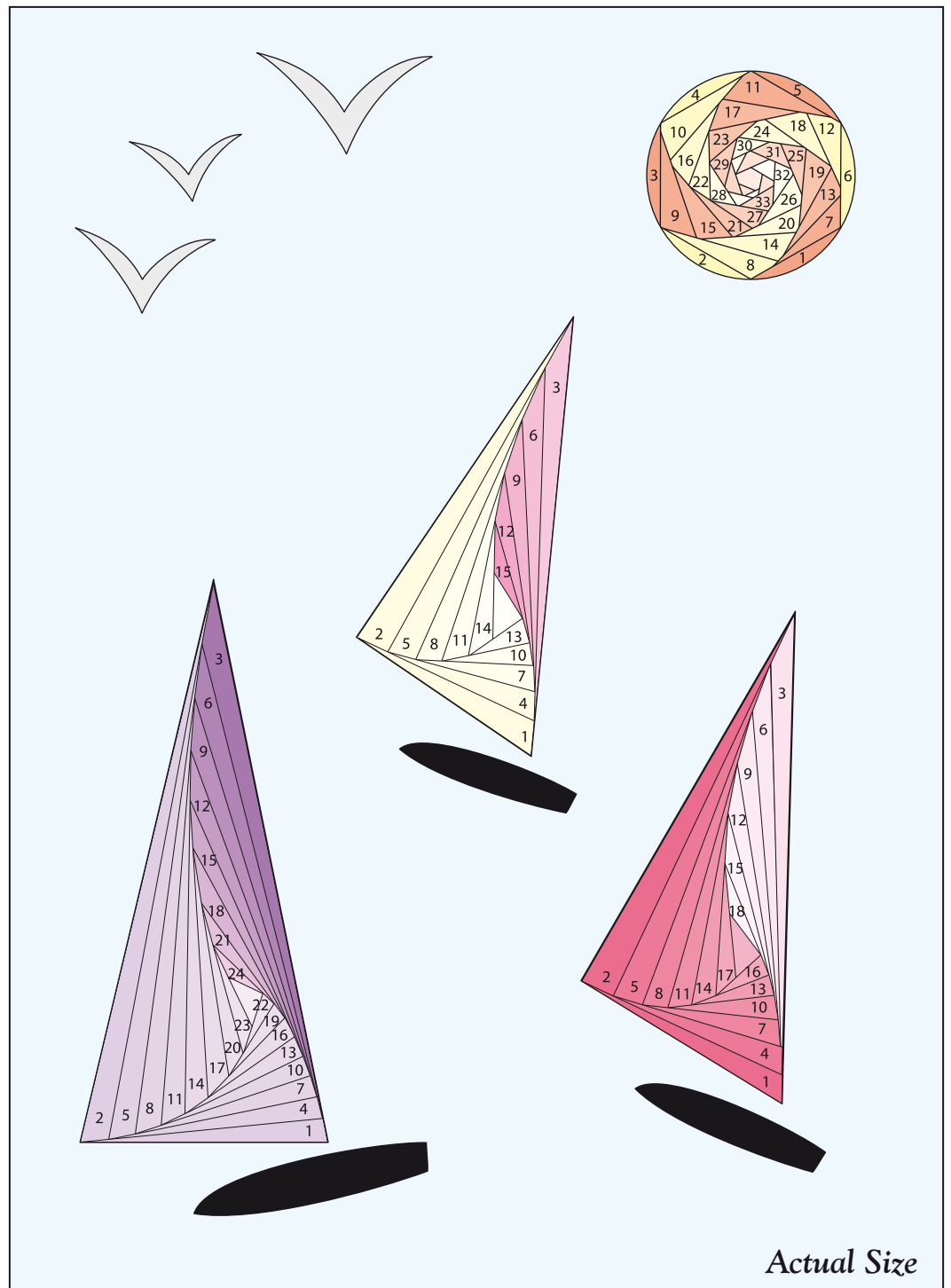
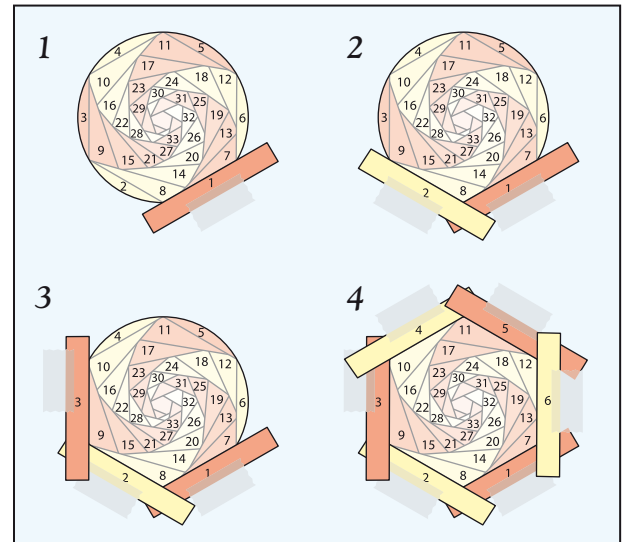
4. Continue round to complete the hexagon alternating the colours and taping along the unfolded edges as shown.

Keep working round covering each section in alternate colours and taping in place. Add a small piece of bronze to cover the tiny hole left in the centre. Tape all over the back of the shape to secure the layers together and carefully peel it off the acetate.

Work each sail using the same method as for the sun except for the colours, here you should use the colours as shown on the diagram which will be 2 strips of the same colour and one in the contrasting colour. You may need to remove each sail as it is completed to give you enough space to work the next one.

Once all the items are made up, position each behind the appropriate aperture, the sun will need to be trimmed so it does not show beyond the edge of the card. Make certain it is securely taped before trimming to fit or it may fall apart. Use double sided tape around the back of the aperture to stick the sun into place.

Check each sail to see if it needs trimming before mounting with double sided tape. Use double sided tape along all four edges of the back flap of the card and fold the centre panel onto this to seal neatly.





Craft CREATIONS^{Ltd} Magazine

Hello,

We hope you enjoy this free article taken from a back issue of the Craft Creations Magazine. You may hand make copies of the card(s) featured in this project, to give away or sell, as many times as you like. You may not use the project, text, pattern or pictures for any other purpose nor make the project using any automated process.

All the free articles available for download on our web site are at least one year old. If you want the latest projects, designer profiles, gallery pages and more, then you need to subscribe to the quarterly Craft Creations Magazine.

Subscription Benefits:

- * A free gift with every issue.
- * 10% off every order placed with Craft Creations*.
- * £2.50 off post and packing on orders over £20*.
- * Prize competition in every issue.
- * New product information.

You can subscribe to the quarterly Craft Creations Magazine or purchase any of the back issues from our online shop.

* All Craft Creations Magazine subscribers will receive an additional 10% discount off their orders during their subscription period only. Subscribers will also receive £2.50 off post and packing on orders over £20 (after discount). These benefits are not applicable on certain items such as: Magazine Subscriptions, Gift Vouchers, Products already on Promotion, Special Offers or 'SPOF' packs and cannot be combined with any other vouchers or offers.

Craft Creations Limited
Ingersoll House, Delamare Road, Cheshunt, Hertfordshire, EN8 9HD, England.
Tel: 01992 781900 Fax: 01992 634339

The details above are correct as of 1st May 2006, but are subject to change without prior notice.