

On A High Note

By Renee Guest

Materials Required:

3mm Quilling paper: Black, Brown, Dark Brown, Light Brown, Red, Bright Green, Yellow and Dark Green with a Gold edge.

1 Pair of 3mm joggle eyes: TRM01.

Gold Label stickers: XL175U-02 Stars and XL065U-02 Merry Christmas (similar).

Glitter powder: GLI25 Pearl.

Tweezers and a small paintbrush.

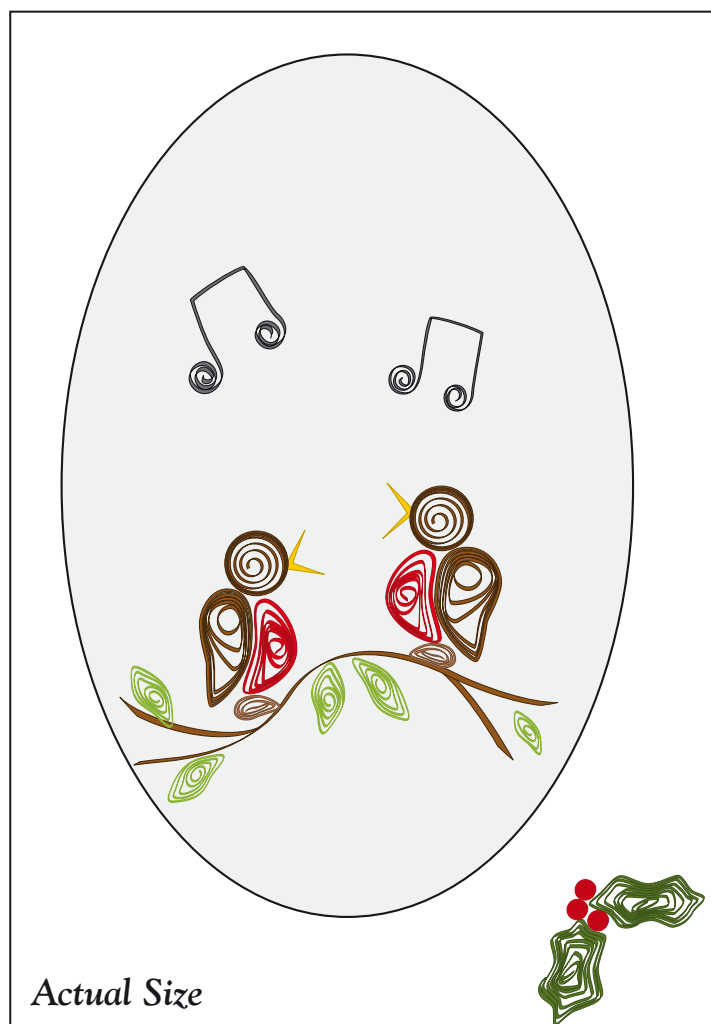
Sheet of paper, Blue stamp pad and sponge.

Quilling tool and P.V.A. Craft adhesive.

Card mount: AP07G-SI-30, White/Silver.

To Make The Card:

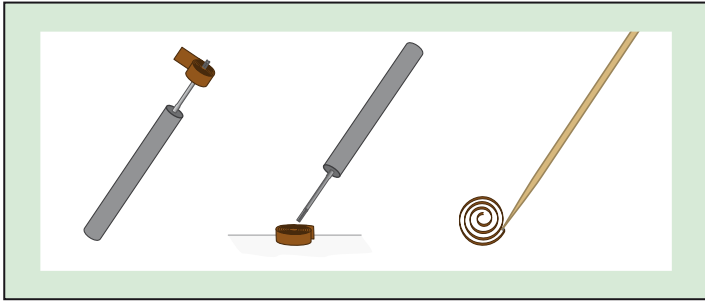
Place the opened out card mount face down and using the blue pad, lightly sponge over the



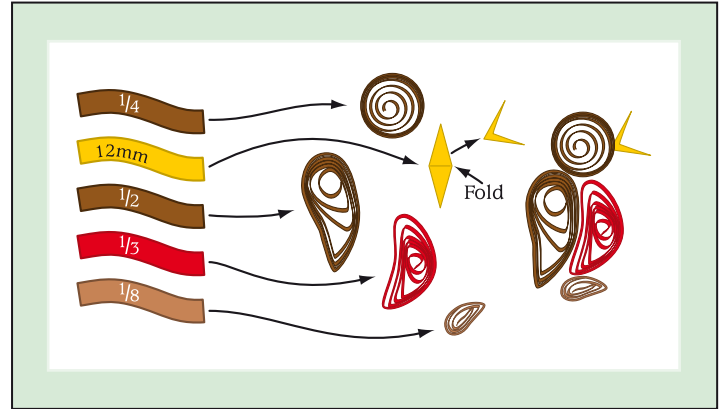
left hand flap to make a blue background. Run a line of glue around the edge of the coloured flap and another around the back of the aperture. Fold the coloured flap behind the aperture, press firmly and allow to dry.

Place the folded card face up on a sheet of clean paper which has been folded in half then unfolded again. Lightly brush slightly diagonal trails of P.V.A glue across the coloured area, squiggles are fine too but try to keep all the lines at roughly the same angle as they will look neater.

Sprinkle the glitter powder over the glue lines, tip and tap the card to distribute the powder then tip the excess powder back onto the sheet of paper. Funnel the spare powder back into the container using the crease in the paper. I have also glued on some tiny, pearly coloured sequin stars to enhance the glitter.

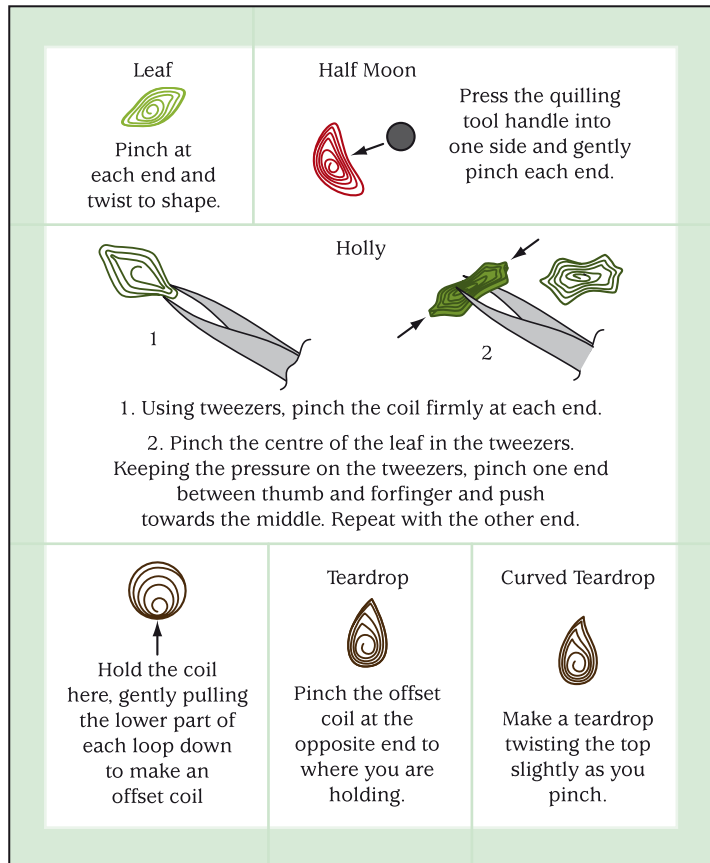


Most of the shapes used in this design are based on closed loose coils. Wind the paper onto the tool, drop the coil off the tool and allow to unwind a little then glue the end applying the glue with a cocktail stick.

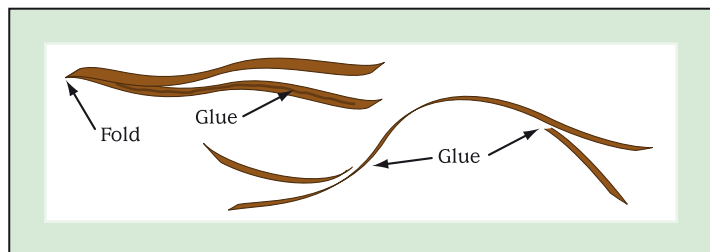


Make two robins using the lengths, colours and shapes shown in the diagram above and glue the pieces together where they touch, see the diagram for position. The beak is simply a small diamond folded in the middle as shown.

Turn the pieces of the second robin over so the robin faces the other way and assemble as before. Glue the two robins onto the card so their feet are resting on the branch and glue an eye onto each.

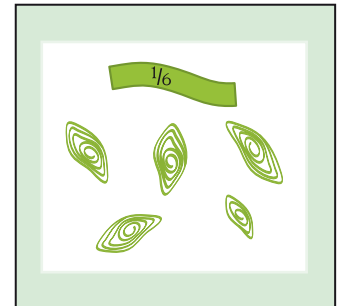


The above diagram shows the basic shapes used in the design worked from loose coils.

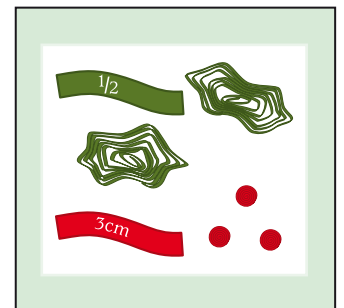


Fold a length of dark brown in half and glue to make a double thickness strip. Cut a 7cm length and snip each end to taper. Curve gently to the shape of the branch and glue into place on the prepared card mount. Cut two more lengths 2cm long and taper each at one end. Glue them onto the branch by the non tapered ends.

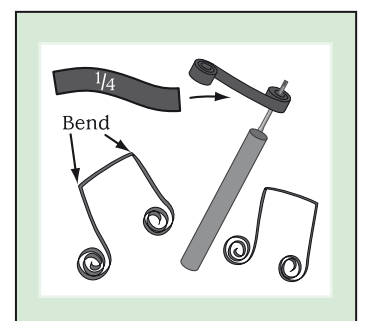
Make the five small leaves using $\frac{1}{6}$ lengths of bright green as shown in the diagram and glue them onto the design using the assembly diagram to guide you.



Make the two holly leaves using a $\frac{1}{2}$ length of dark green/gold for each. The holly berries are made from tight pegs, wind the paper onto the tool and glue the end before removing so it stays tight. Make three berries from 3cm lengths of red. Glue them into a sprig with the leaves on the corner of the card mount.



Using a $\frac{1}{4}$ length of black for each, make the two musical notes as shown. Wind one end six turns onto the tool and hold tight for a moment (to give a tighter curl once released). Wind the other end so the curl is on the opposite side of the paper, bend as shown then glue into place on the card.



Stick the silver star and Merry Christmas onto the card using the photo for positioning.



Craft CREATIONS^{Ltd} Magazine

Hello,

We hope you enjoy this free article taken from a back issue of the Craft Creations Magazine. You may hand make copies of the card(s) featured in this project, to give away or sell, as many times as you like. You may not use the project, text, pattern or pictures for any other purpose nor make the project using any automated process.

All the free articles available for download on our web site are at least one year old. If you want the latest projects, designer profiles, gallery pages and more, then you need to subscribe to the quarterly Craft Creations Magazine.

Subscription Benefits:

- * A free gift with every issue.
- * 10% off every order placed with Craft Creations*.
- * £2.50 off post and packing on orders over £20*.
- * Prize competition in every issue.
- * New product information.

You can subscribe to the quarterly Craft Creations Magazine or purchase any of the back issues from our online shop.

* All Craft Creations Magazine subscribers will receive an additional 10% discount off their orders during their subscription period only. Subscribers will also receive £2.50 off post and packing on orders over £20 (after discount). These benefits are not applicable on certain items such as: Magazine Subscriptions, Gift Vouchers, Products already on Promotion, Special Offers or 'SPOF' packs and cannot be combined with any other vouchers or offers.

Craft Creations Limited
Ingersoll House, Delamare Road, Cheshunt, Hertfordshire, EN8 9HD, England.
Tel: 01992 781900 Fax: 01992 634339

The details above are correct as of 1st April 2007, but are subject to change without prior notice.