

Cross Stitch Dolphin

By Joanne Sanderson

Stitched on 14 count White Aida using 2 strands for the cross stitch and 1 strand for the backstitch.

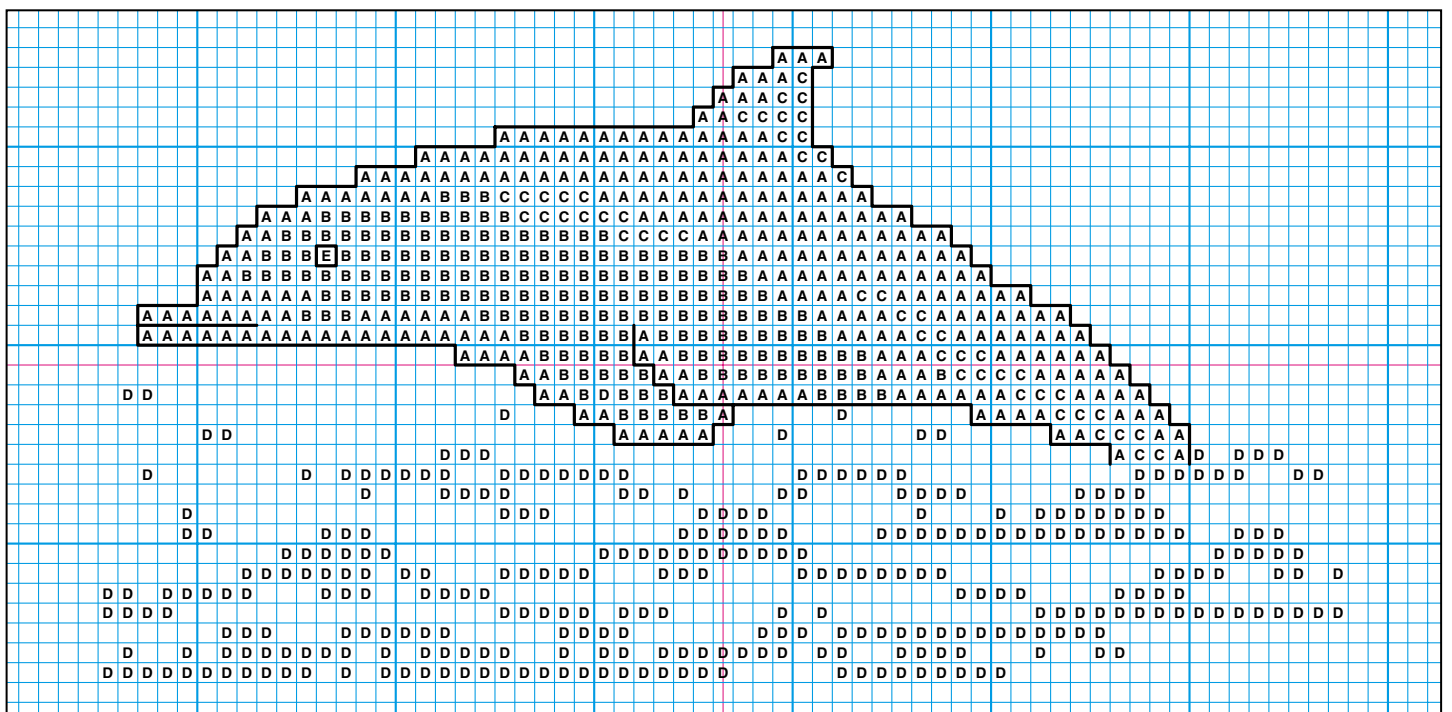
This dolphin design fits into a DE07U card. Stitch count: width 60 x depth 32.

This card has been stitched using DMC threads. Using Anchor or Madeira colours may give a slightly different, although equally pleasing, finished result.



DMC		ANCHOR	MADEIRA
A - 535	Dark Grey	273	1809
B - 762	Very Pale Grey	234	1804
C - 928	Blue Grey	900	1805
D - 67	Blue Variegated*	1211	N/A
E - 310	Black	403	Black
— - 310	Outlines/Black	403	Black

*Note when stitching the sea (colour D), the thread is a random mix, so you should complete each stitch as you go.



Craft CREATIONS^{Ltd} Magazine

Hello,

We hope you enjoy this free project. You may hand make copies of this project, to give away or sell, as many times as you like. You may not use the pattern, project, text or pictures for any other purpose nor make the project using any automated process.

The project was taken from a back issue of the Craft Creations Magazine.

All the articles on our web site are at least one year old. If you want the latest projects, designer profiles, gallery pages and more, then you need to subscribe to the quarterly Craft Creations Magazine.

Subscription Benefits Include:

- * A free gift with every issue.
- * Two discount vouchers off Craft Creations products with every issue.
- * A £2.50 off post and packing voucher with every issue.
- * New product information.
- * Prize competitions in every issue.

You can subscribe to the quarterly Craft Creations Magazine or purchase any of the back issues from our online shop.

<http://www.craftcreations.com/Shop/shop.html>