

Poppies

By Pat Huffam

This design has been stitched on 14 count White Aida, using 2 strands throughout, except for the backstitch which uses 1 strand. It will fit a card with a 94 x 145mm oblong aperture.

<u>DMC</u>	<u>ANCHOR</u>	<u>MADEIRA</u>
A - 817	A - 334	A - 0209
B - 815	B - 20	B - 0513
C - 966	C - 241	C - 1401
D - 989	D - 243	D - 1402
E - 310	E - 403	E - Black
F - 741	F - 304	F - 0203
G - 744	G - 301	G - 0112
H - 898	H - 380	H - 2007
— - 815	— - 20	— - 0513
— - 898	— - 380	— - 2007

This design has been stitched using Anchor threads. Using DMC or Madeira may give slightly different colouring.



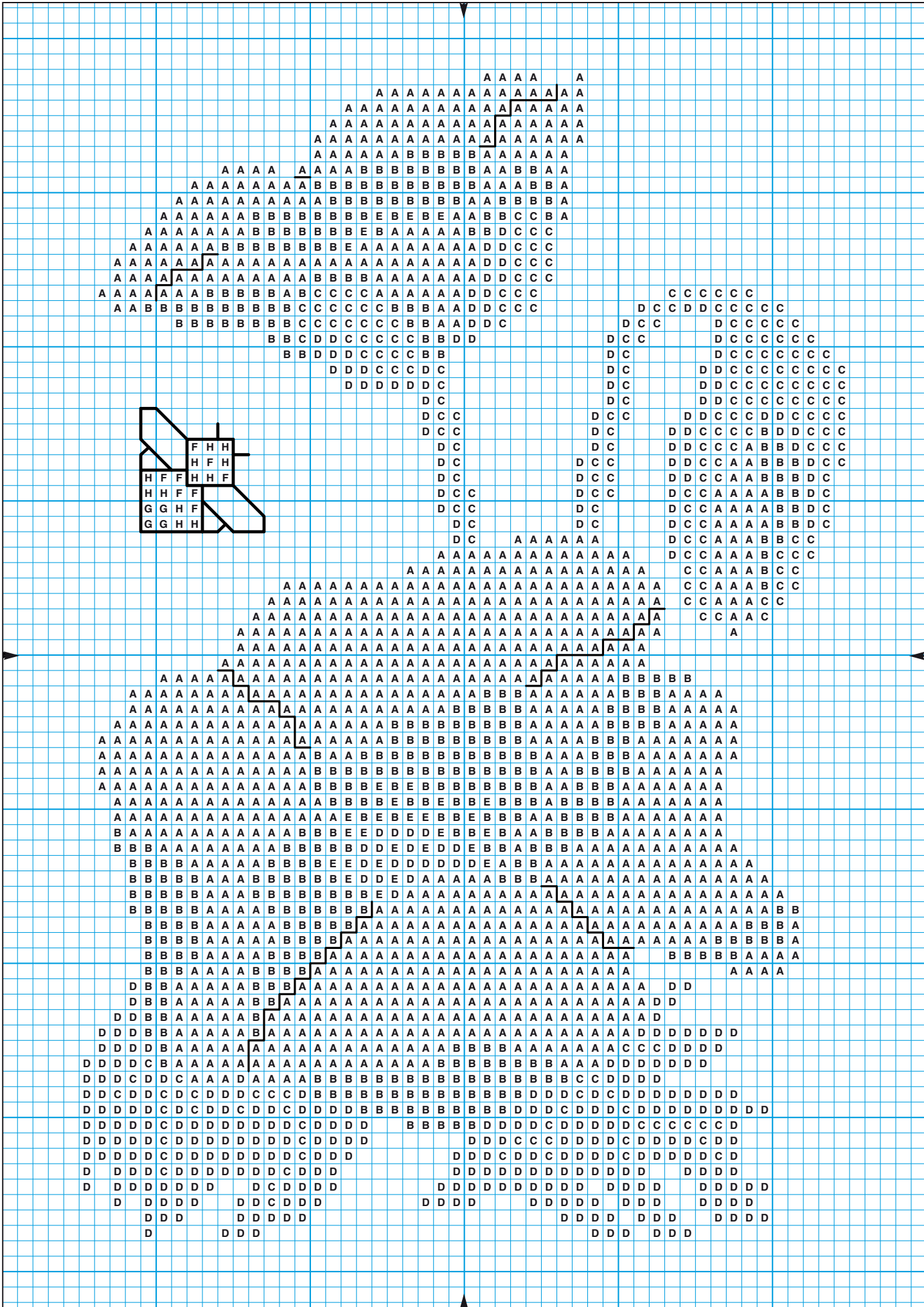
Hints & Tips

If your design has been stitched on Aida and you are using a dark coloured mount, place some white paper behind your work so that the colour of the card does not show through the holes in the fabric and spoil the look of your design.

Hetty King, Luton.

Take care not to mark the surface of the card with your fingernails when glueing it together after mounting your work. It is easy to do and spoils the appearance of your finished card.

Jo Crouch, Hatfield.





Craft CREATIONS^{Ltd} Magazine

Hello,

We hope you enjoy this free article taken from a back issue of the Craft Creations Magazine. You may hand make copies of the card(s) featured in this project, to give away or sell, as many times as you like. You may not use the project, text, pattern or pictures for any other purpose nor make the project using any automated process.

All the free articles available for download on our web site are at least one year old. If you want the latest projects, designer profiles, gallery pages and more, then you need to subscribe to the quarterly Craft Creations Magazine.

Subscription Benefits:

- * A free gift with every issue.
- * 10% off every order placed with Craft Creations*.
- * £2.50 off post and packing on orders over £20*.
- * Prize competition in every issue.
- * New product information.

You can subscribe to the quarterly Craft Creations Magazine or purchase any of the back issues from our online shop.

* All Craft Creations Magazine subscribers will receive an additional 10% discount off their orders during their subscription period only. Subscribers will also receive £2.50 off post and packing on orders over £20 (after discount). These benefits are not applicable on certain items such as: Magazine Subscriptions, Gift Vouchers, Products already on Promotion, Special Offers or 'SPOF' packs and cannot be combined with any other vouchers or offers.

Craft Creations Limited
Ingersoll House, Delamare Road, Cheshunt, Hertfordshire, EN8 9HD, England.
Tel: 01992 781900 Fax: 01992 634339

The details above are correct as of 1st April 2007, but are subject to change without prior notice.